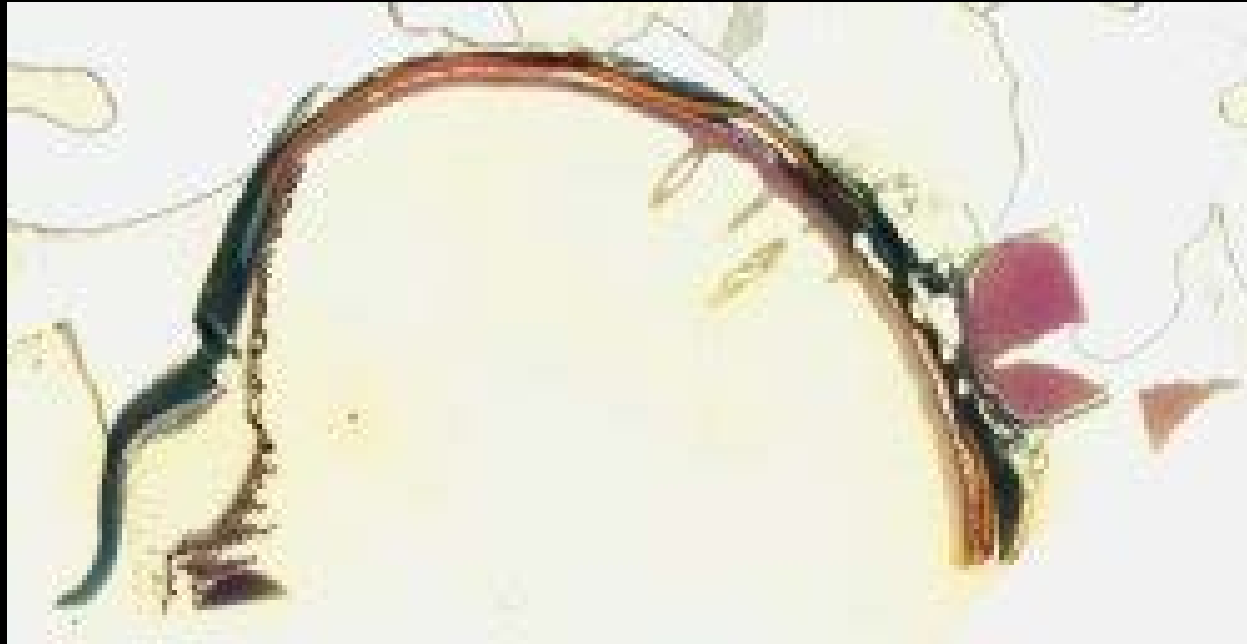


Kevin O'Day  
Animal Histology Collection

Digitalized slides courtesy of the Histology Department,  
Monash University

# Albatross (Diomededeidae sp) - Fovea - Slide



# Albatross (Diomededeidae sp) - Slide 163



American leaf-toed gecko  
(*Phyllodactylus martini*) - Slide 678



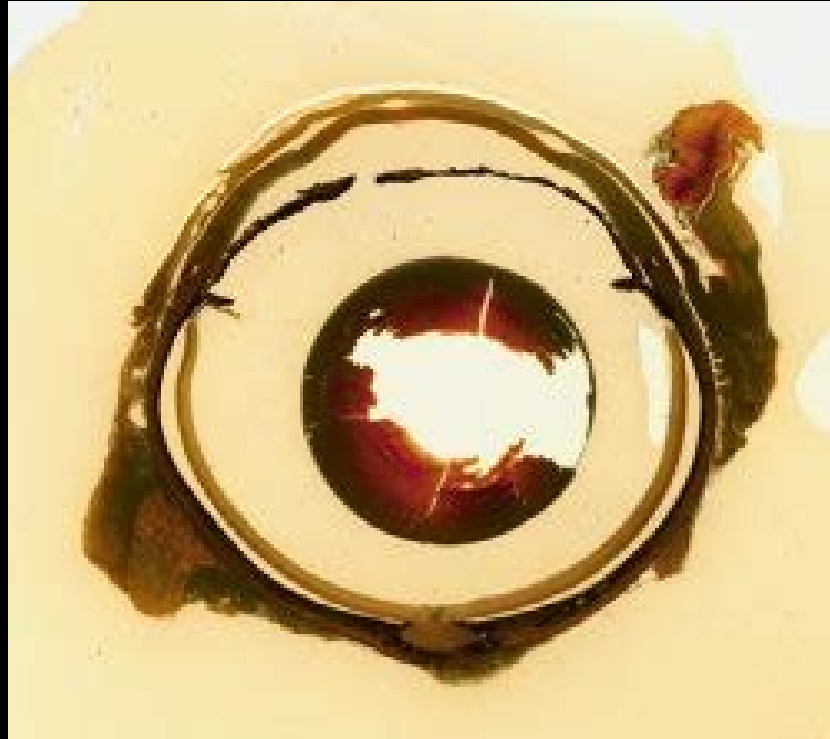
Australian python  
(*Morelia spilota variegata*) - Slide 98



Australian python  
(*Morelia spilota variegata*) - Slide 100



Australian python  
(*Morelia spilota variegata*) - Slide 104



Australian water dragon  
(*Intellagama lesueurii* sp) - Slide 168





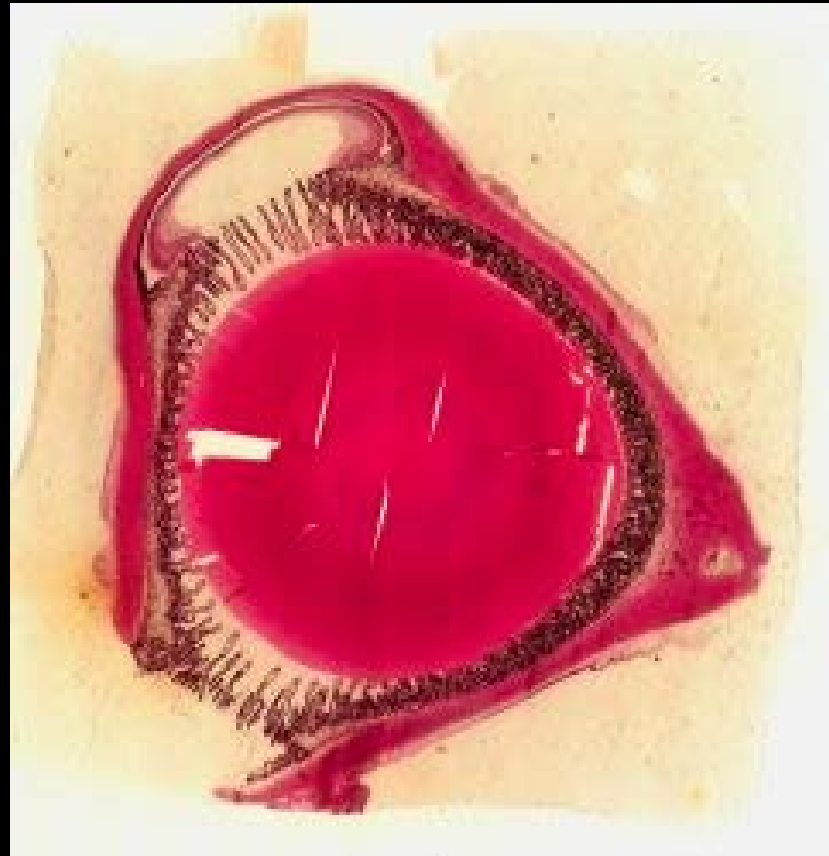
# Bandicoot (*Perameles longicauda*) - Slide 380



Black-tailed wallaby  
(*Wallabia bicolor*) - Slide 505



Black-tailed wallaby  
(*Wallabia bicolor*) - Slide 514



Blotched blue-tongued lizard  
(*Tiliqua nigrolutea*) - Slide 65



# Brazilian gecko (*Gymnodactylus* sp) - Slide 59



Bribon's toadlet or Brown toadlet  
(*Pseudophryne bibronii*) - Slide 107



# Burton's legless lizard (*Lialis burtonis*) - Slide 48



Common ringtail possum  
(*Pseudocheirus peregrinus*) - Slide 394





Common ringtail possum  
(*Pseudocheirus peregrinus*) - Slide 395



# Cunningham's skink (*Egernia cunninghami*) - Slide 616



Eastern bearded dragon  
(*Pogona barbata*) - Slide 67



Eastern bearded dragon  
(*Pogona barbata*) - Slide 68



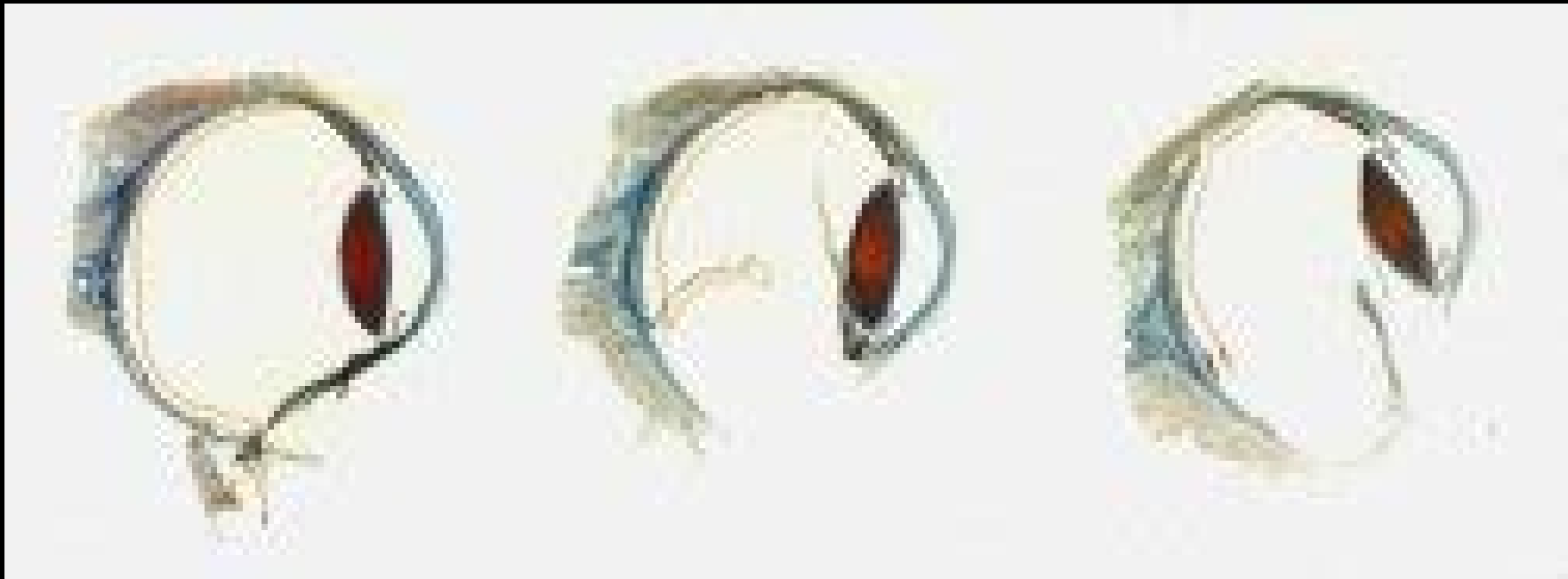
Eastern bearded dragon  
(*Pogona barbata*) - Slide 71



Eastern bearded dragon  
(*Pogona barbata*) - Slide 136



Echidna (*Tachyglossus aculeatus*)  
Edge of retina - Slide 272



Echidna (*Tachyglossus aculeatus*)  
Edge of retina - Slide 273

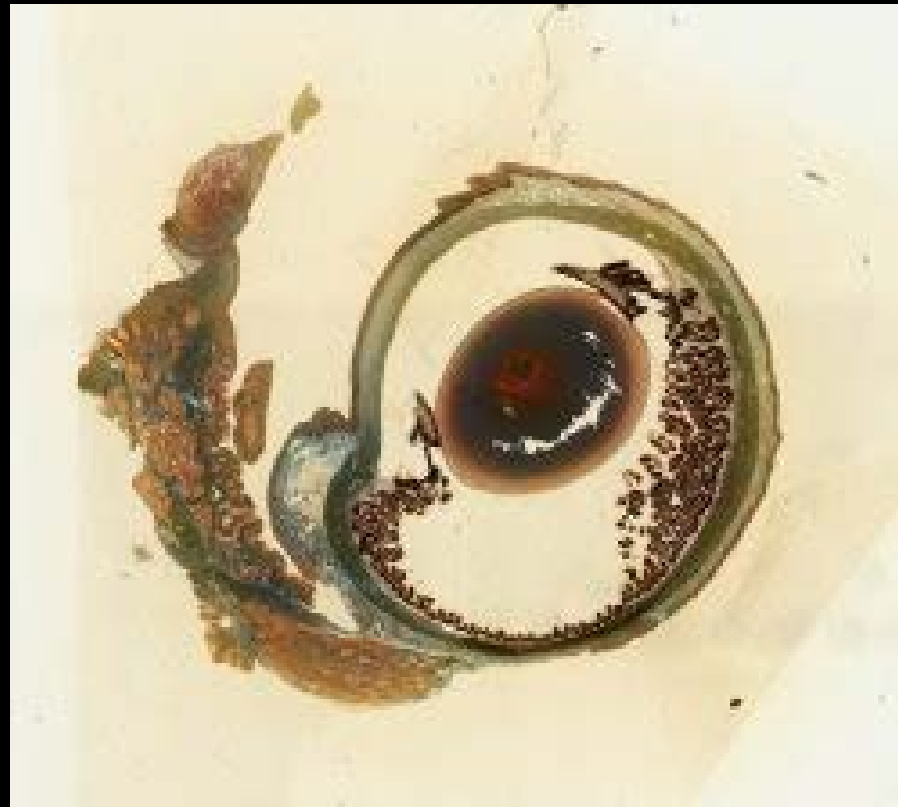




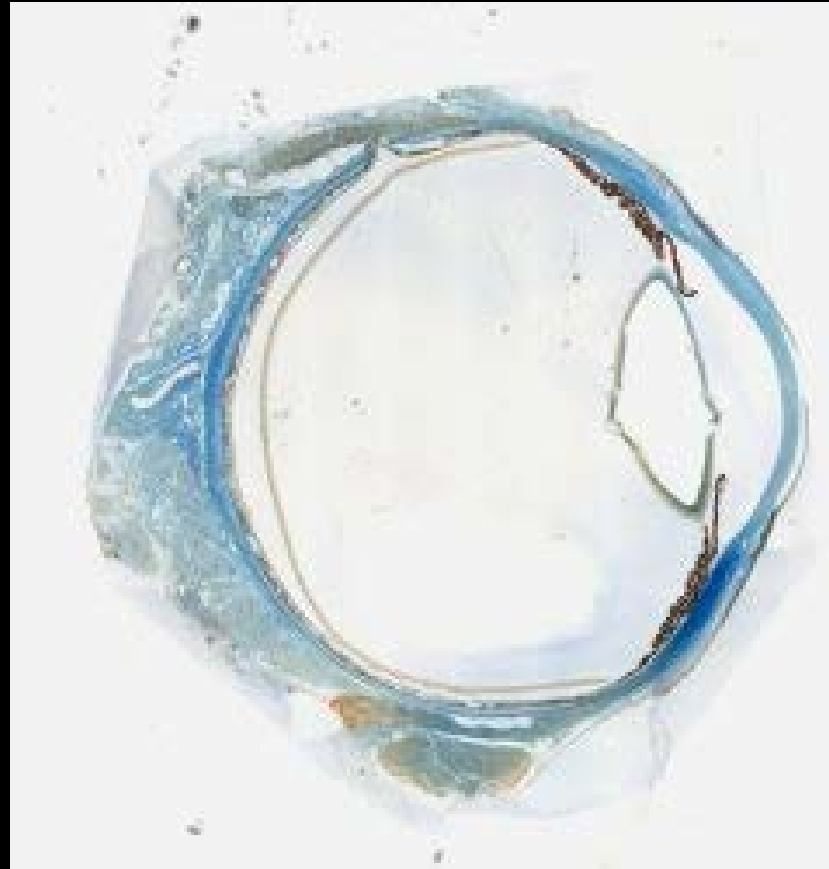
Echidna (*Tachyglossus aculeatus*)  
Optic Nerve - Slide 264



Echidna (*Tachyglossus aculeatus*)  
Optic Nerve - Slide 297



# Echidna (*Tachyglossus aculeatus*) - Slide 225



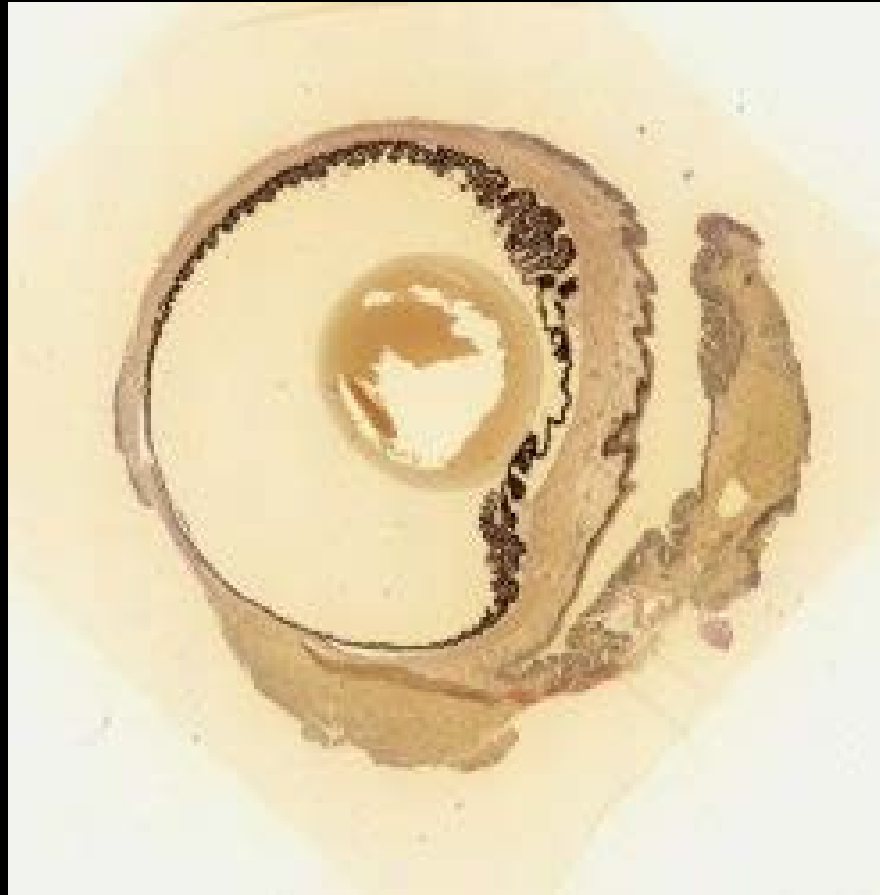
# Echidna (*Tachyglossus aculeatus*) - Slide 245



# Echidna (*Tachyglossus aculeatus*) - Slide 248



# Echidna (*Tachyglossus aculeatus*) - Slide 251



# Echidna (*Tachyglossus aculeatus*) - Slide 276



# Echidna (*Tachyglossus aculeatus*) - Slide 283

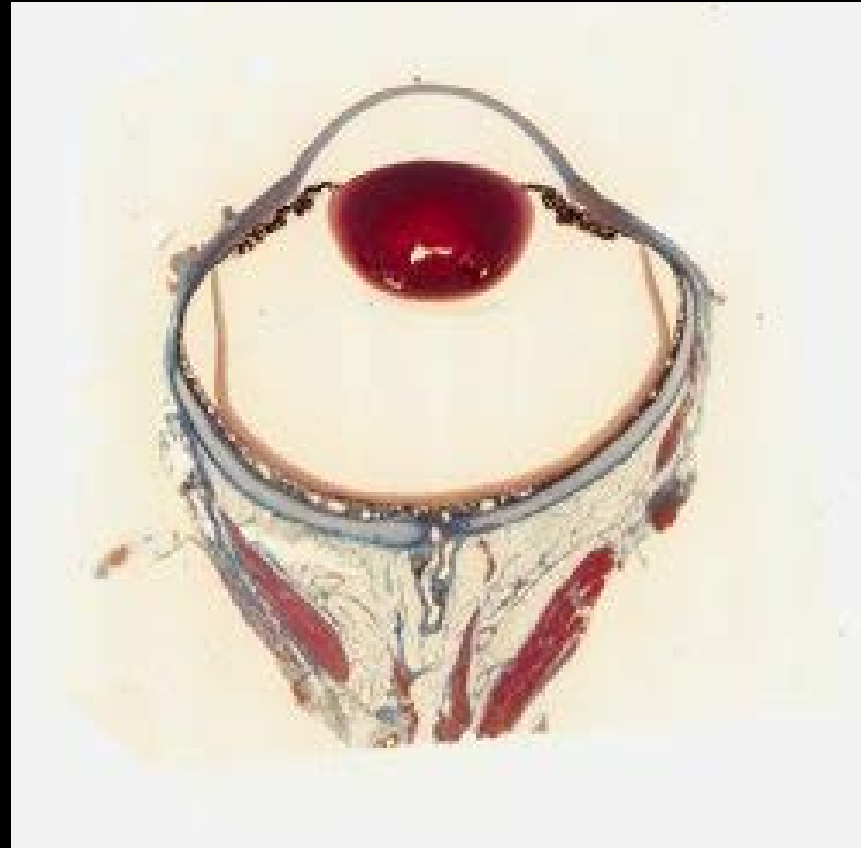




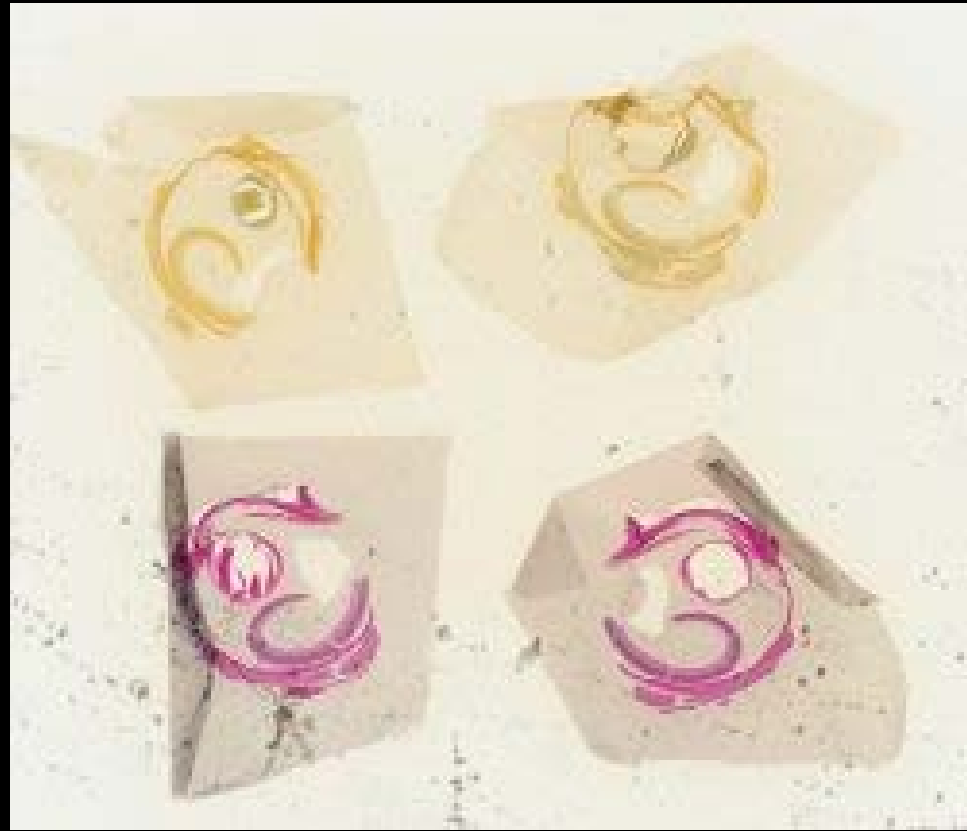
# Echidna (*Tachyglossus aculeatus*) - Slide 752



# Echidna (*Tachyglossus aculeatus*) - Slide 804



# Fraser's delma (*Delma fraseri*) - Slide 34



# Fraser's delma (*Delma fraseri*) - Slide 41



Gippland water dragon  
(*Physignathus lesueurii*) - Fovea Slide 614



# Goanna (Varanus sp) - Slide 140



# Goanna (Varanus sp) - Slide 146

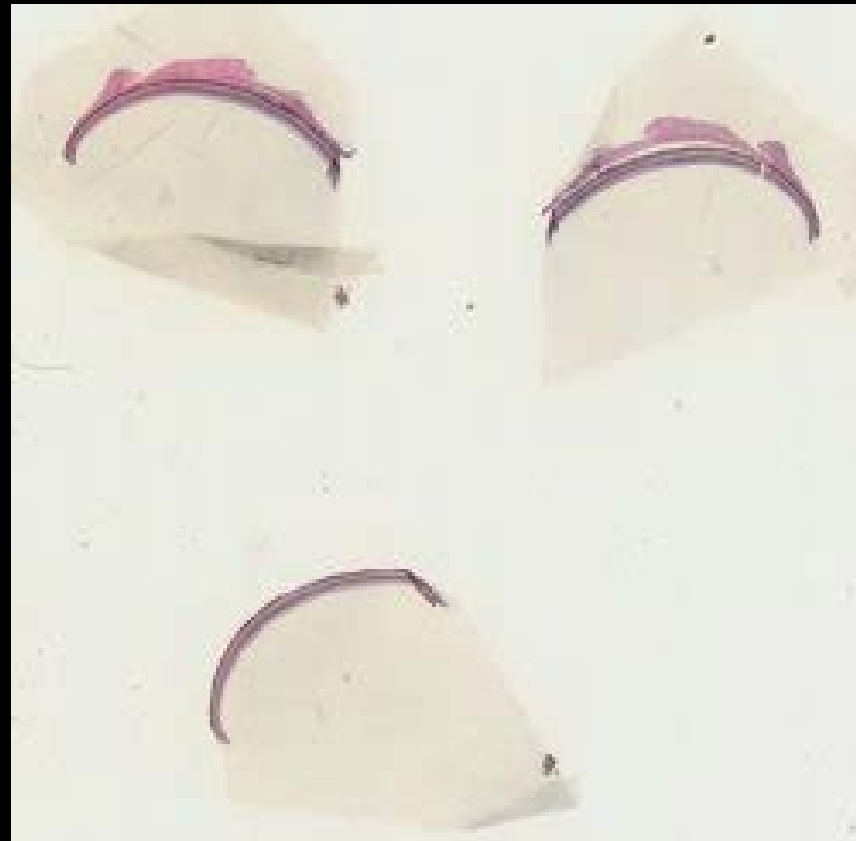


# Goanna (Varanus sp) - Slide 147





# Green and golden bell frog (*Litoria aurea*) - Slide 25



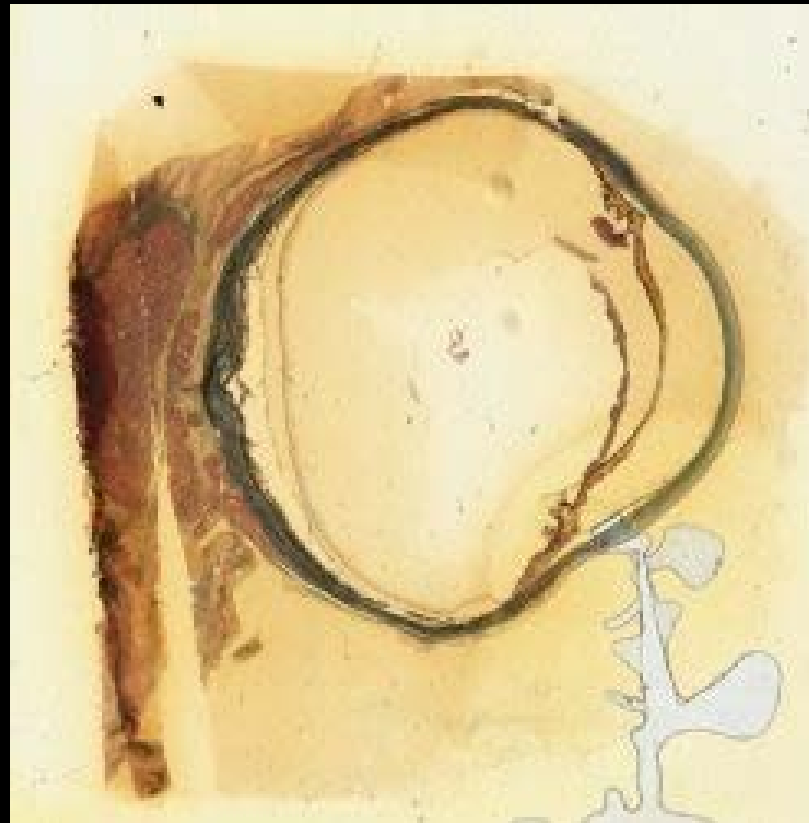
# Green and golden bell frog (*Litoria aurea*) - Slide 26



Jacky lizard (*Amphibolurus muricatus*)  
fovea Slide 666



# Koala (*Phascolarctos cinereus*) - Slide 376



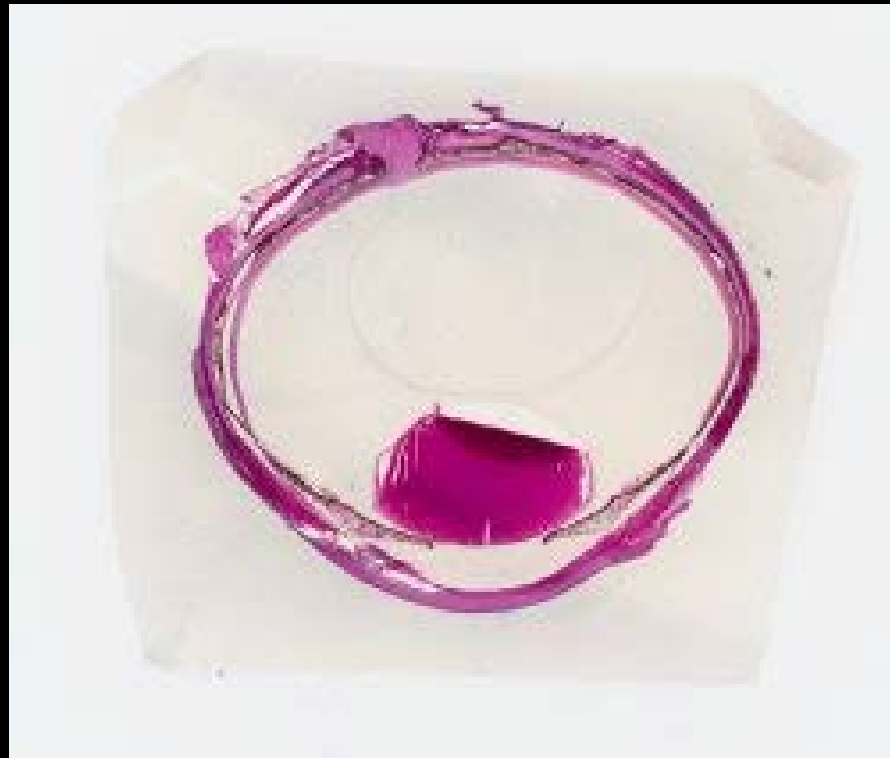
Long eared bat  
(*Nyctophilus geoffroyi*) - Slide 794



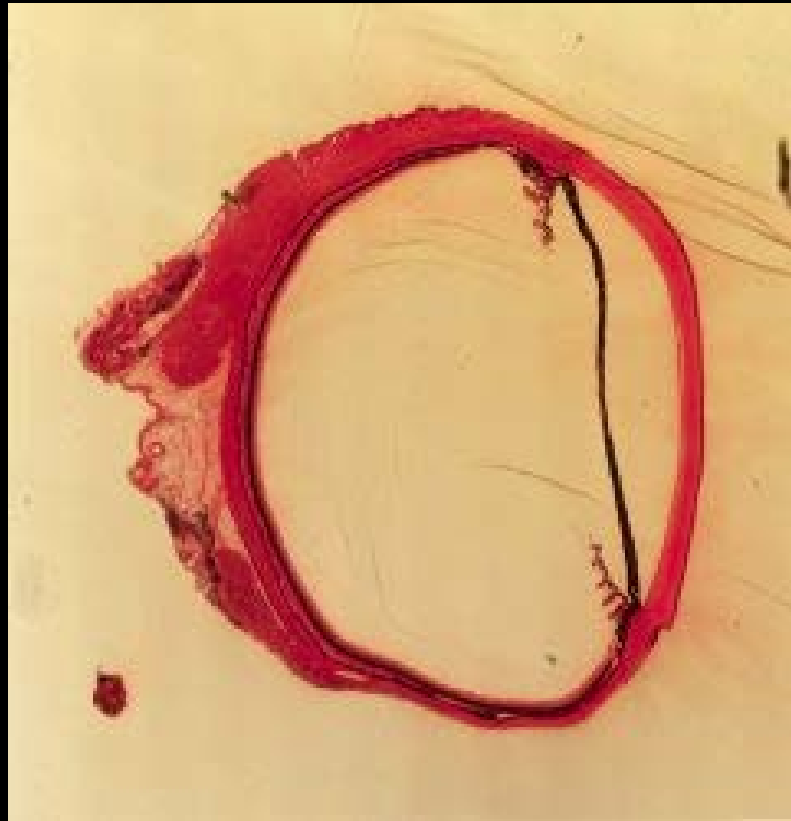
Lowland copperhead  
(*Denisonia superba*) - Slide 117



Murray River turtle  
(*Emydura macquarii*) - Slide 608



# Native cat or Quoll (*Dasyurus* sp) - Slide 316

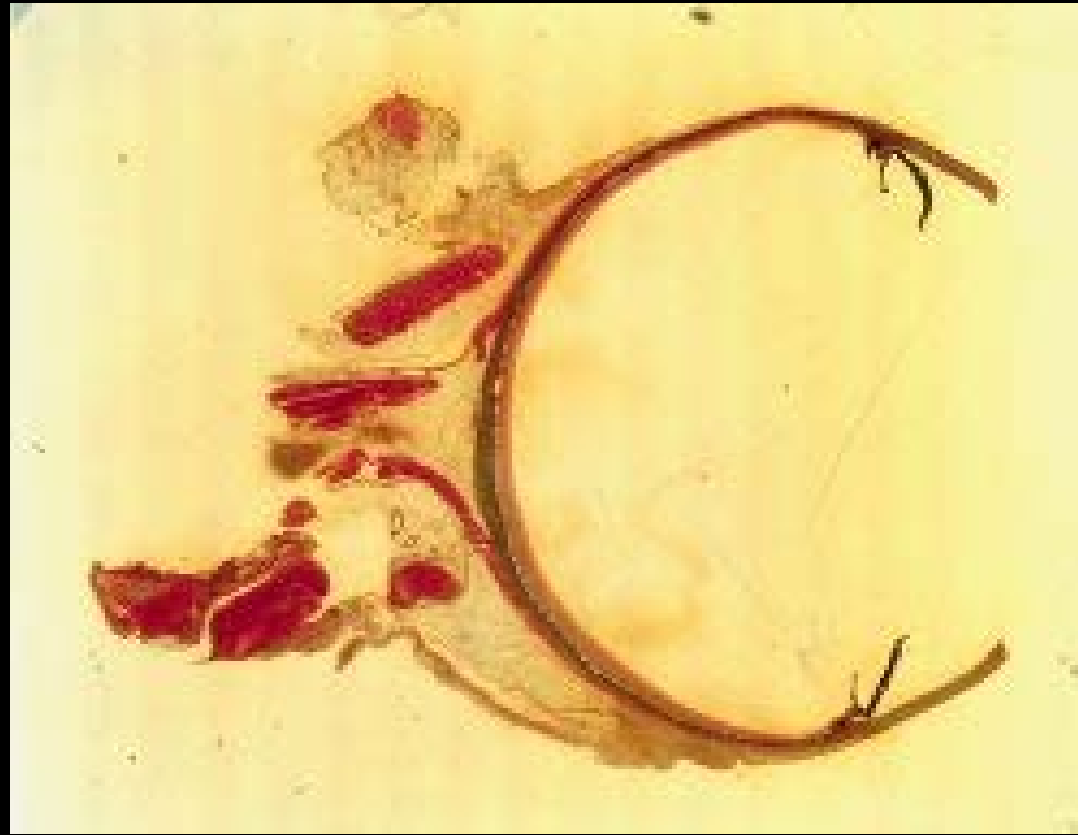




# Native cat or Quoll (*Dasyurus* sp) - Slide 332



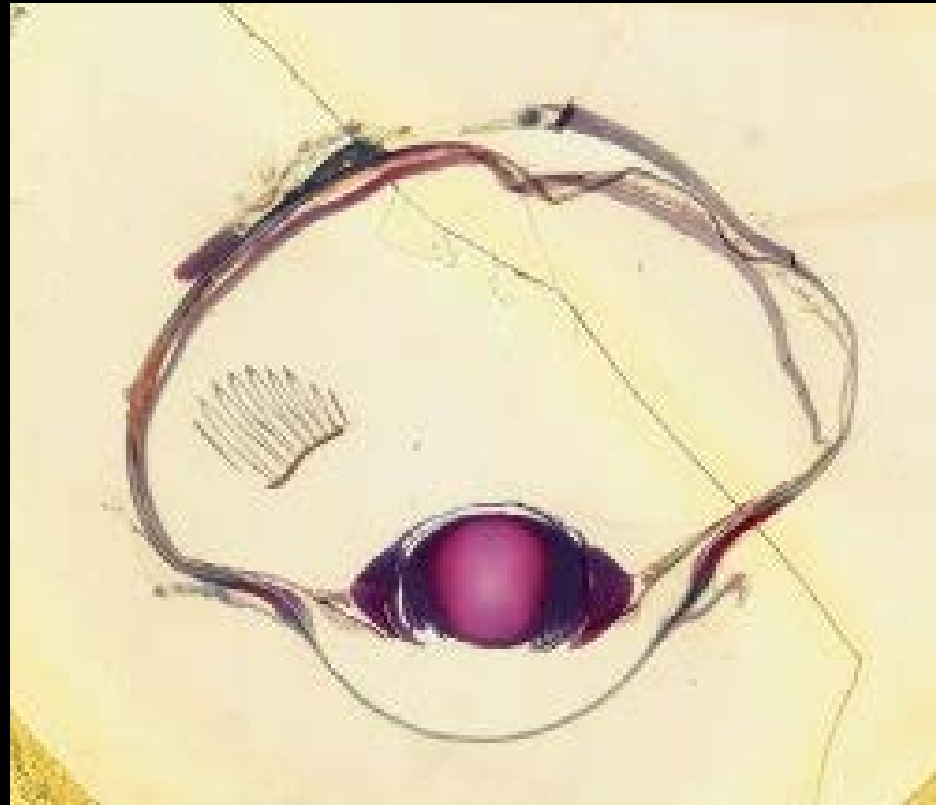
# Native cat or Quoll (*Dasyurus* sp) - Slide 348



# Peter's blind snake (*Ramphotyphlops bituberculatus*) - Slide 108



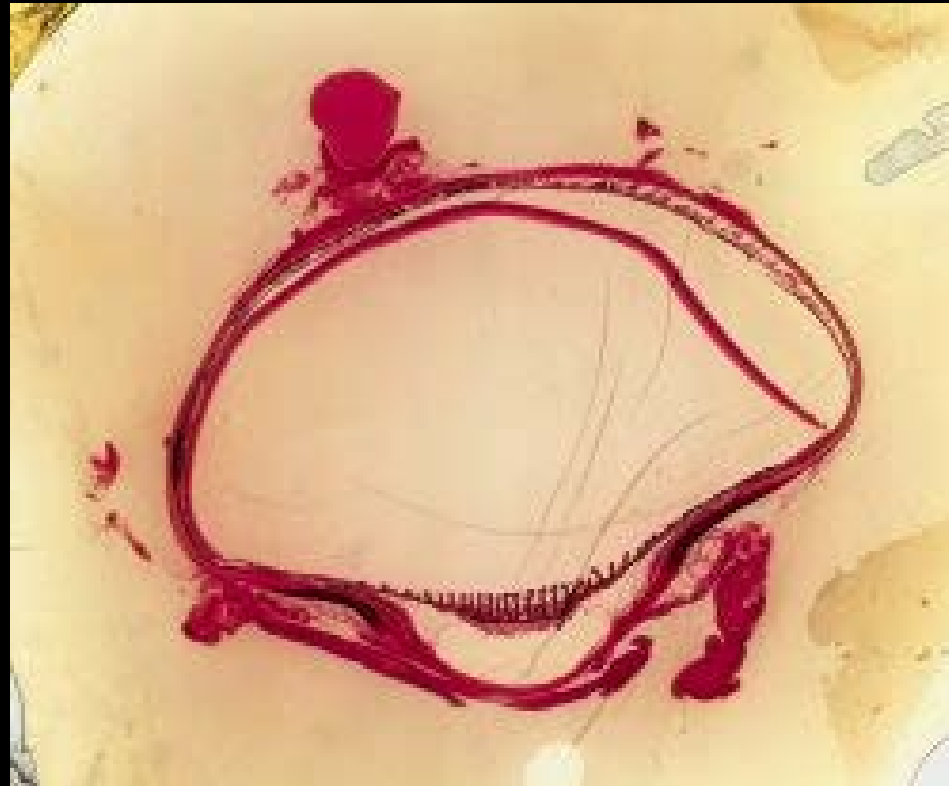
# Pigeon (Columbidae sp) - Slide 174



# Pigeon (Columbidae sp) - Slide 179



# Pigeon (Columbidae sp) - Slide 183



# Pigeon or dove (Columbidae sp) - Slide 190



# Platypus (Ornithorhynchus anatinus) - Slide 203





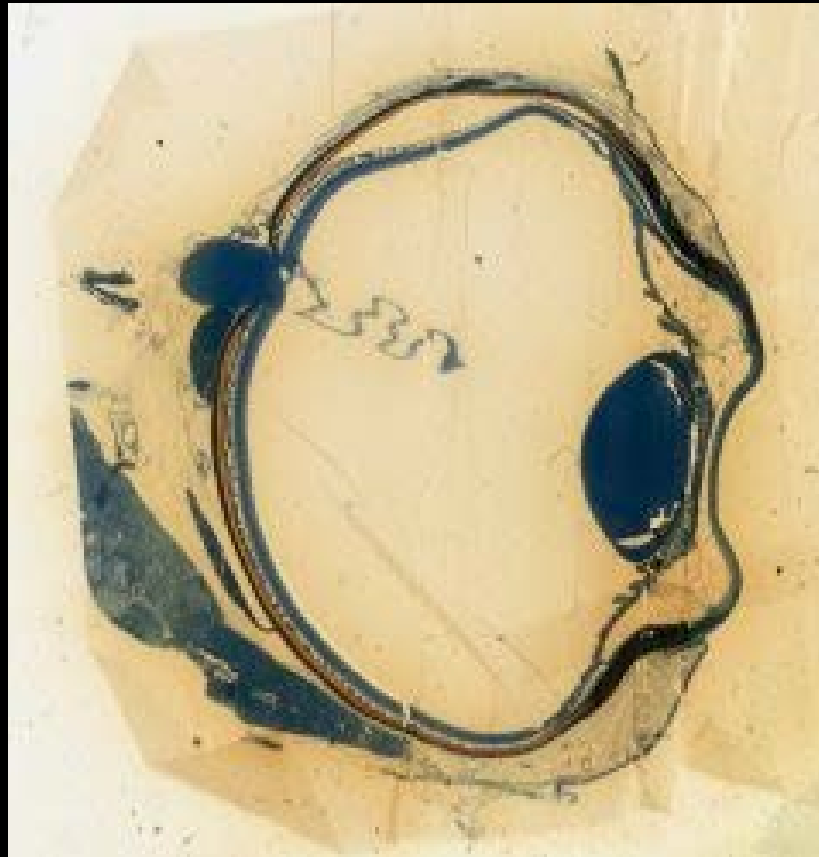
# Platypus (Ornithorhynchus anatinus) - Slide 544



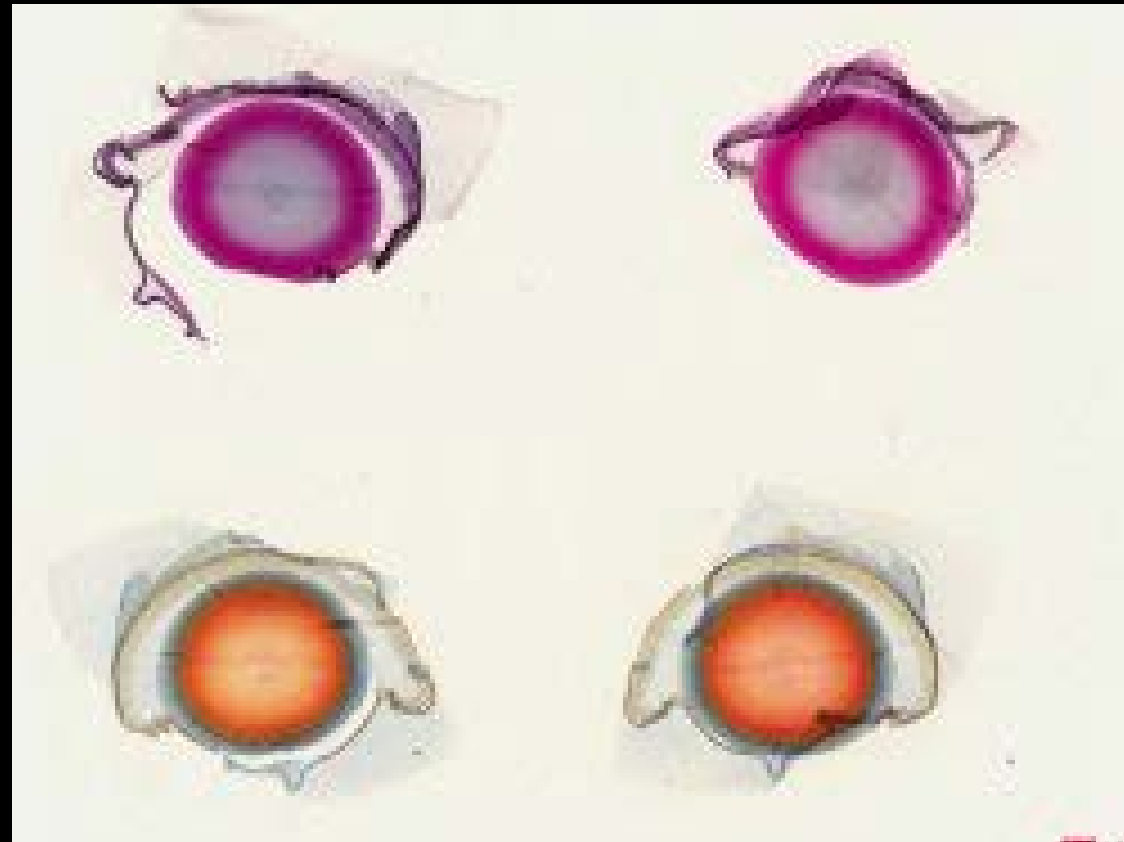
# Rhesus macaque (*Macaca mulatta*) - Slide 710



Short-tailed shearwater  
(*Ardenna tenuirostris*) - Slide 188



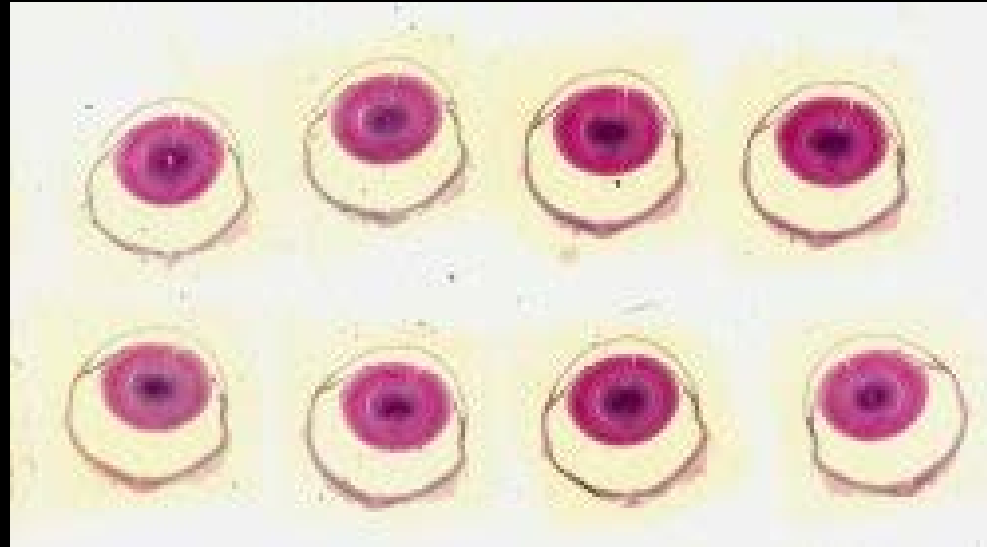
# Southern brown tree frog (*Litoria ewingii*) - Slide 29



Southern grass skink  
(*Pseudemoia entrecasteauxii*) - Slide 673



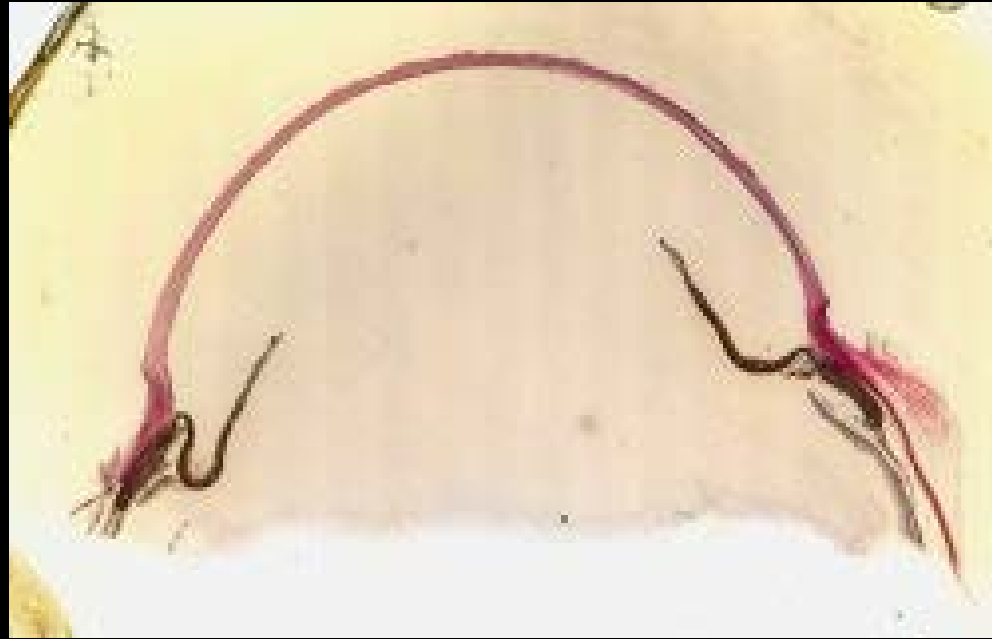
Striped marsh frog  
(*Limnodynastes peronii*) - Slide 31



# Tarsier (Tarsius sp)



# Tarsius (Tarsius sp) - Slide 695

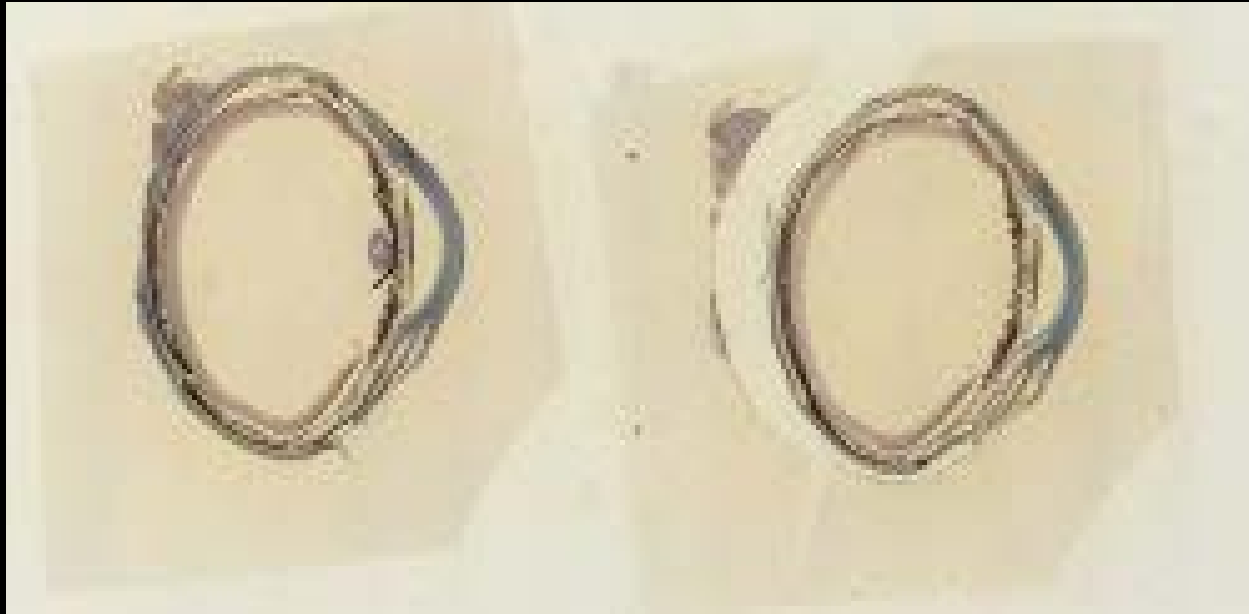




# Tiger snake (*Notechis scutatus*) - Slide 124



# Tortoise (Testudinidae sp) - Slide 128



# Tortoise (Testudinidae sp) - Slide 683



# Trout (*Oncorhynchus* sp) - Slide 13



# Trout (Oncorhynchus sp) - Slide 597



# White's skink (*Egernia whitii*) - Slide 83

