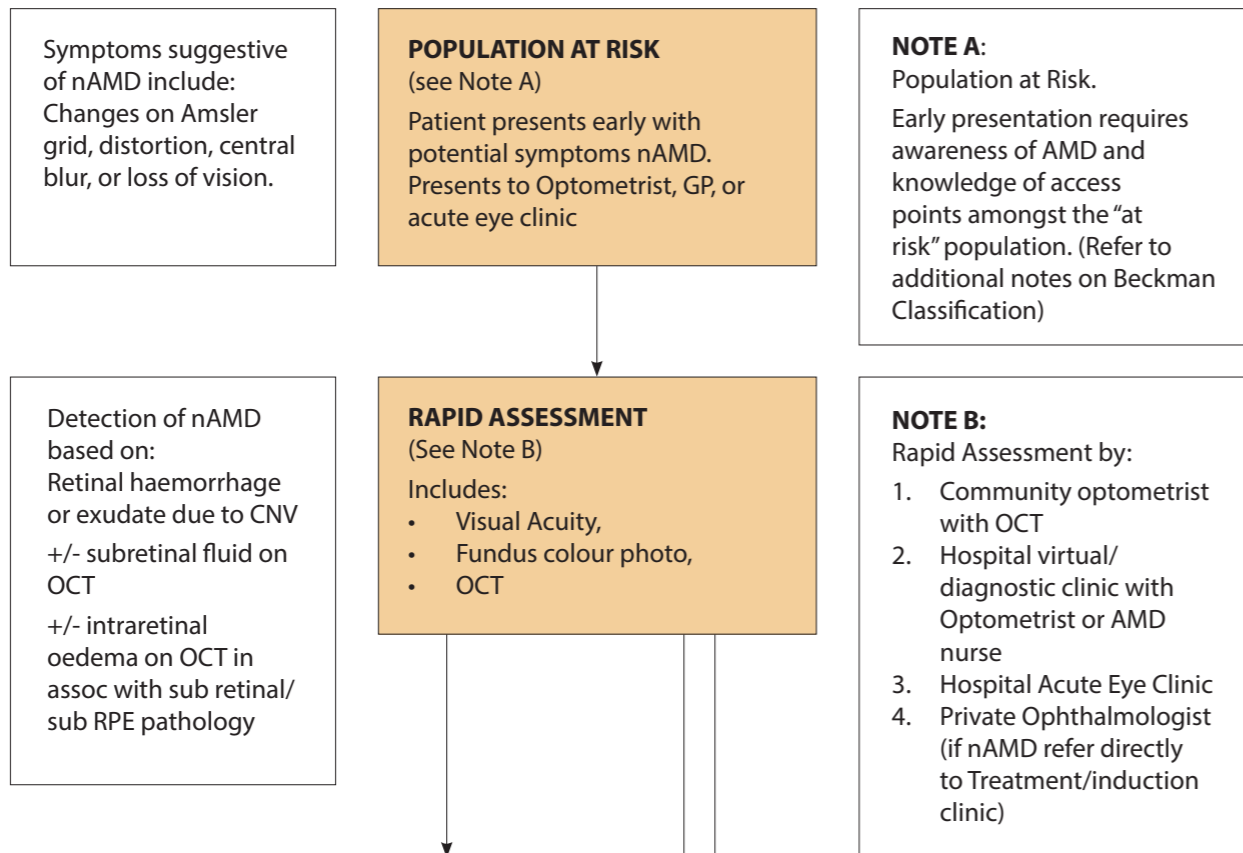
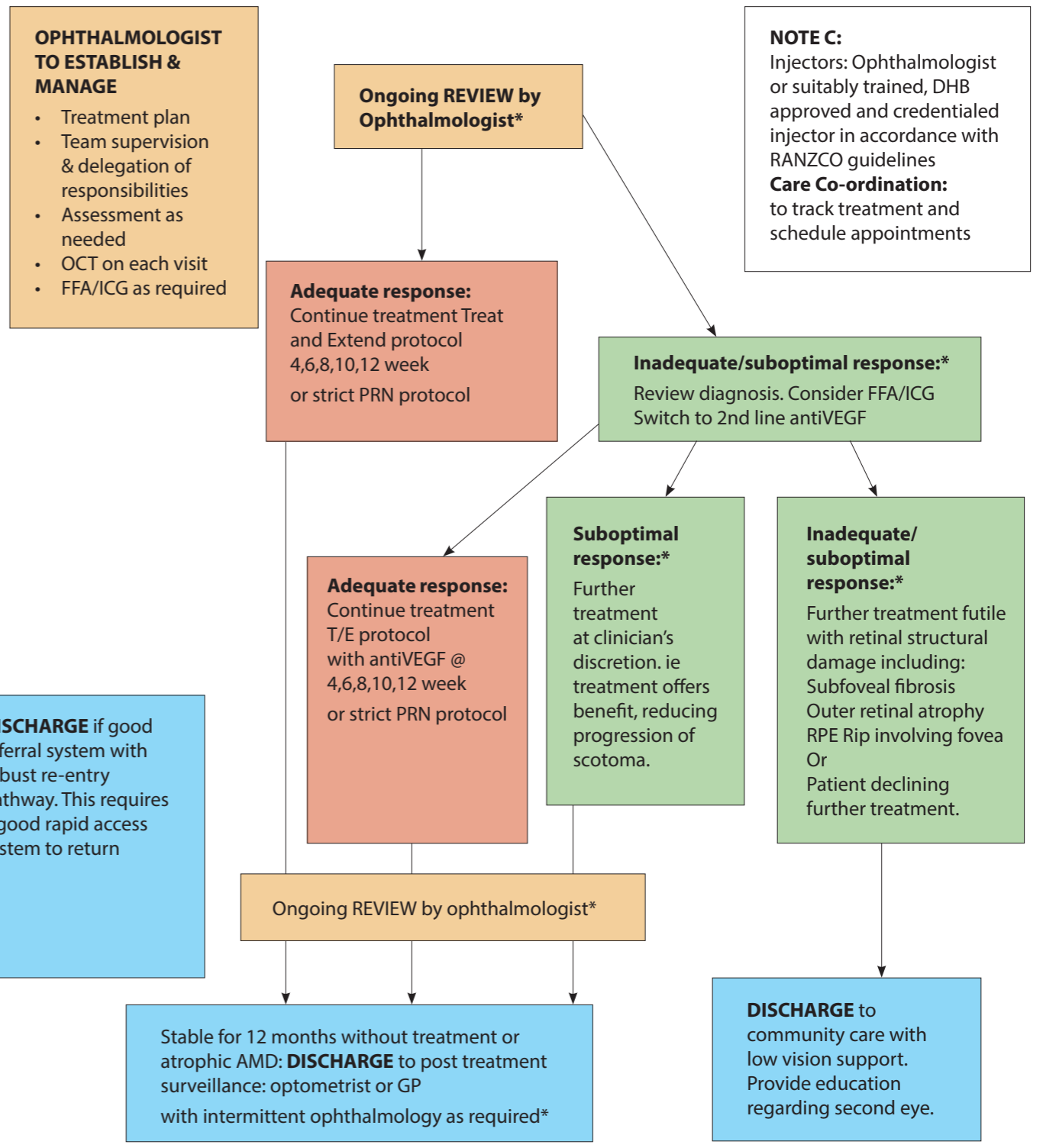
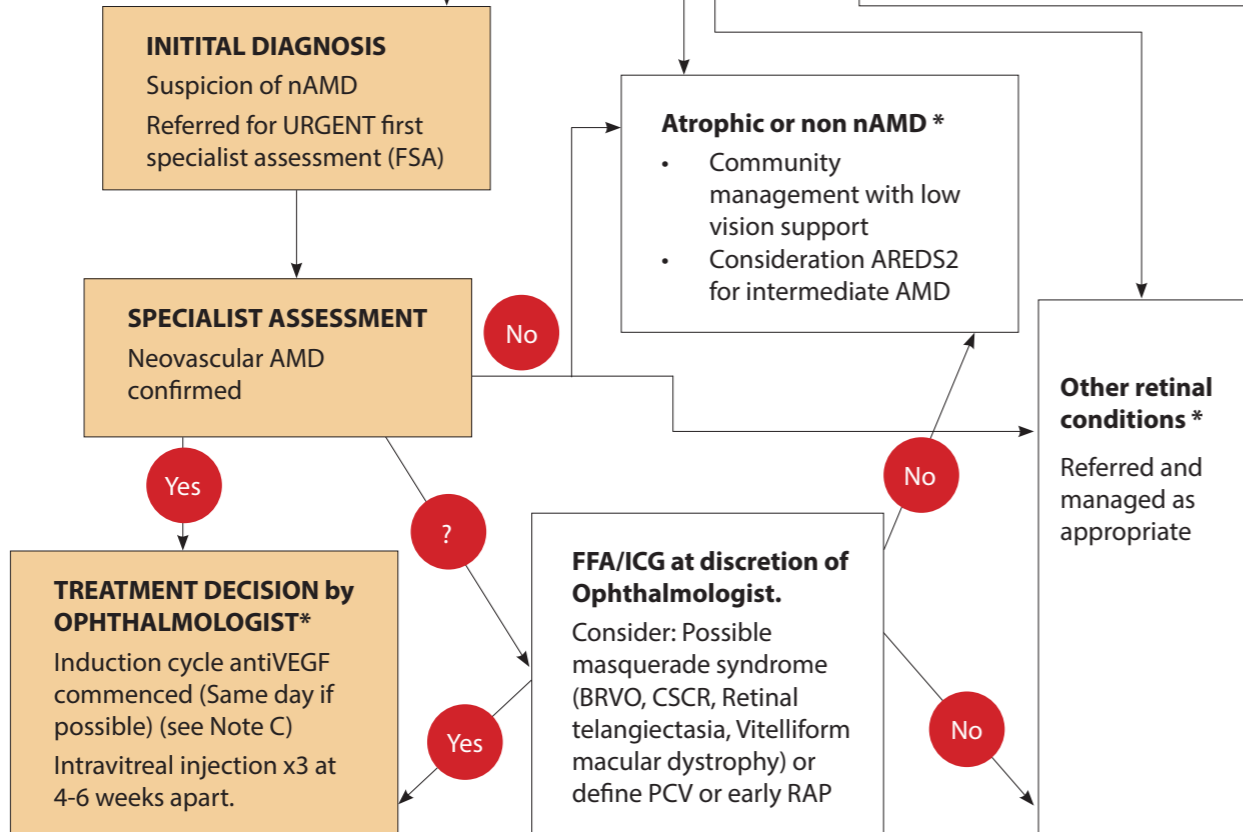


# NZ National guidelines for management of neovascular AMD

INITIAL ASSESSMENT WITHIN ONE WEEK OF SYMPTOMS



TREATMENT COMMENCED WITHIN ONE WEEK OF DIAGNOSIS



**\*Low vision rehabilitation (LVR).**  
Any patient with  $\leq 6/12$  vision may benefit from LVR.  
\*Indicates possible referral points for Low Vision rehabilitation if appropriate at multiple points in the pathway.  
LVA may be hospital or community based  
Refer to MDNZ and Blind Foundation (if eligible) for support and information