



RANZCO

The Royal Australian
and New Zealand
College of Ophthalmologists

RANZCO Specialist Assessment Guide for Applicants (Australia)

94-98 Chalmers Street, Surry Hills NSW 2010
Phone: +61 2 9690 1001 Fax: +61 2 9690 1321
ACN 000 644 404

www.ranzco.edu

Disclaimer

The information set out in this publication is current at the date of first publication and is intended for use as a guide of a general nature only. The information contained in this publication is not exhaustive of the subject matter and should be read in conjunction with The Royal Australian and New Zealand College of Ophthalmologists Specialist International Medical Graduate (SIMG) Comparability and Area of Need (AoN) Suitability Assessment Policy (Australia) and is subject to the same review cycle of this policy. Persons implementing any recommendations contained in this publication must exercise their own independent skill or judgement or seek appropriate professional advice relevant to their own circumstances when doing so.

The Royal Australian and New Zealand College of Ophthalmologists (RANZCO) and its employees and agents shall have no liability (including without limitation liability by reason of negligence) to any users of the information contained in this publication for any loss or damage (consequential or otherwise), cost or expense incurred or arising by reason of any person using or relying on the information contained in this publication and whether caused by reason of any error, negligent act, omission or misrepresentation in the information.

Published by

The Royal Australian and New Zealand College of Ophthalmologists
94-98 Chalmers Street
Surry Hills NSW 2010 Australia
Mail to: PO Box 92 Strawberry Hills NSW 2012

T +61 2 9690 1001

www.ranzco.edu

ACN 000 644 404

We recognise the traditional custodians of the land and sea on which we work and live. © 2022 The Royal Australian and New Zealand College of Ophthalmologists

Contents

About this Guide	5
Introduction.....	5
Using this guide.....	5
About the College	5
The role of RANZCO	5
What is FRANZCO?	6
Working as an ophthalmologist in Australia	6
The Basics	6
The Specialist Pathway	7
Pathway detail	7
Who is eligible for assessment?.....	7
Roles and responsibilities of the applicant.....	8
Selecting your pathway	9
Which pathway applies to me?	9
Specialist assessment process	10
Who will assist me with my application?	11
Assessment fees	11
How we assess your application	11
Assessment criteria	11
Comparability of assessment	12
Available assessments.....	12
Definitions of comparability	13
Resulting actions	13
Assessment stages.....	14
Stages defined	14
What happens at each stage?	14
AoN assessment	17
Timeframes	18
About the RANZCO Advanced Clinical Examination (RACE)	19
Overview.....	19
Completion of pathway.....	19
Educational support	19
SIMG resources	19
Supervision.....	20
Policies and procedures	20
Privacy.....	20
Appeals	21
Useful contacts	21

Glossary of terms

<u>Acronym</u>	<u>Full Term</u>
AHPRA	Australian Health Practitioner Regulation Agency (AHPRA) is the administrative body of the Australian Medical Board
AMC	Australian Medical Council process requests from SIMGs for primary source verification (PSV) of their medical qualifications
AoN	Area of Need are the geographical locations determined by state and territory governments, primarily in rural and remote areas, where there is an inability of employers to attract locally trained specialists
DWS	District of Workforce Shortage
FRANZCO	Fellow of The Royal Australian and New Zealand College of Ophthalmologists
MBA	Medical Board of Australia responsible for the registration of medical practitioners, developing standards, codes and guidelines as well as investigating complaints about medical practitioners.
MCNZ	The Medical Council of New Zealand
RANZCO	The Royal Australian and New Zealand College of Ophthalmologists (the College)
SIMG	Specialist International Medical Graduate
SIMG Policy	RANZCO SIMG Comparability and Area of Need Suitability Assessment Policy
SPR	Summary of preliminary review
VTP	Vocational Training Program

About this Guide

Introduction

A Specialist International Medical Graduate (SIMG) is an overseas trained specialist who has a primary qualification in medicine and surgery awarded by a training institution recognised by both the [Australian Medical Council](#) and the [World Directory of Medical Schools](#) (WDOMS) and who has satisfied all the training and examination requirements to practise in their field of specialty in their country of training.

Australia offers the opportunity for SIMGs to work in a variety of settings including in regional, rural, and remote areas. The Royal Australian and New Zealand College of Ophthalmologists (RANZCO) recognises the substantial contribution SIMGs make to the medical workforce.

Pathways to work in Australia can be found on the [Australian Medical Council](#) website. Information about the registration process can be obtained from the [Australian Health Practitioner Regulation Agency](#). Specialists who have obtained ophthalmologist qualifications outside of Australia, and who wish to practise in Australia must apply to RANZCO for assessment.

Using this guide

This guide is designed to help answer questions about the pathways to specialist registration and Fellowship of RANZCO, including the process for recognition of skills and processes involved as well as to provide detail on the various resources and supports available throughout.

Here we provide some basic information on the requirements for Australian medical registration. This is followed by a step-by-step guide on how to get your skills recognised by RANZCO. Helpful tips are also provided throughout as well as FAQs and solutions to common problems and indicators of key decisions.

This guide does not apply to applicants who are seeking vocational registration (i.e., specialist registration) in New Zealand with the Medical Council of New Zealand. Those applicants should visit the [New Zealand information page](#) on our website.

For further details on the Specialist Recognition Assessment process please also refer to the *RANZCO SIMG Comparability and Area of Need Suitability Assessment Policy (Australia)* (SIMG Policy) document which is available on our website at [Policies and Guidelines](#).

About the College

The role of RANZCO

RANZCO is the medical college responsible for the training and professional development of ophthalmologists in Australia and New Zealand. This includes maintaining a Continuing Professional Development (CPD) system, a Vocational Training Program (VTP), organising scientific congresses and meetings, and much more.

The objective of the five-year Vocational Training Program (VTP) is to produce a specialist ophthalmologist who, on completion of training, is equipped to undertake safe, unsupervised, comprehensive, general ophthalmology practice.

RANZCO is also tasked with the assessment of Specialist International Medical Graduates (SIMGs) in ophthalmology on behalf of both the Medical Board of Australia (MBA) and Medical Council of New Zealand (MCNZ). Upon completion of its assessment process, RANZCO makes a recommendation to the relevant authority as to whether a SIMG should be recognised as a specialist in either Australia or New Zealand. RANZCO has no role in granting medical registration.

What is FRANZCO?

The Fellowship of RANZCO (FRANZCO) is an approved specialist qualification for specialist registration in Ophthalmology. There are five pathways towards FRANZCO:

- Specialist Pathway
- Ophthalmologist of Eminence
- Australian and New Zealand medical graduates with overseas specialist qualifications
- Ophthalmologists assessed by the Medical Council of New Zealand
- RANZCO Vocational Training Program (VTP)

To find out more about RANZCO Fellowship, visit [RANZCO Membership and CPD](#).

Working as an ophthalmologist in Australia

An ophthalmologist in Australia is required to have undertaken a minimum of 12 years of education and training, comprising:

- Minimum of five years medical and surgical degree
- Minimum of two years (including the intern year) postgraduate prevocational experience
- Minimum of five years of ophthalmic specialist training and successful completion of training and assessment requirements set by RANZCO.

Australian trainees graduate as specialists equipped to undertake safe, unsupervised, comprehensive, general ophthalmology practice. Once SIMGs have been through the assessment process and deemed substantially comparable and fulfilled all further requirements they will also be able to work as ophthalmologists in Australia.

We recommend that SIMGs familiarise themselves with the [RANZCO Vocational Training Program](#) and its [Curriculum Standards](#) in order to make an informed decision about their likely comparability prior to application.

SIMGs should note that overseas trained specialists may experience difficulties meeting the standards required for specialist practice in Australia or may require significant periods of up skilling to meet the standards.

The Basics

It is important that all SIMG applicants are fully informed of, and comply with, the relevant Commonwealth, state or territory legislation and regulatory requirements that may affect their application.

All applicants must adhere to the SIMG policy for assessment issued by RANZCO and must openly disclose all information that may be relevant to their assessment.

The Specialist Pathway

There are two assessment pathways for SIMGs:

1. **Specialist recognition** for SIMGs who are seeking recognition to obtain specialist medical registration to practise unsupervised or independently in Australia; and
2. **Combined specialist recognition and area of need (AON) suitability assessment** for SIMGs who have been selected by an employer as suitable for consideration for appointment to a designated AoN consultant position in Australia.

Pathway details

What is specialist recognition assessment?

Specialist Recognition Assessment evaluates the training, qualifications and experience of SIMGs for comparability with Australian-trained ophthalmologists.

What is area of need assessment?

Area of Need (AoN) assessment is for SIMGs with a specialist ophthalmology qualification who have been offered a position in Australia in a designated 'AoN'.

Area of Need (AoN) is a declaration made by the relevant State or Territory Department of Health relating to a specific position (role vacancy) which lies within a geographical area in which the provision of a particular service is inadequate for the need. The purpose of this is to give the employer the option of filling the position with an SIMG.

RANZCO is not responsible for determining AoN positions or assisting applicants to find an AoN position. You should apply directly to the hospital or private practice in the area where you wish to work or contact a recruitment agency. It is your responsibility to secure a suitable placement in an Australian hospital or private practice. Your potential employer will be able to advise you if the position you have been offered is classified as an AoN.

If you have secured an AoN position, you will need to be assessed by RANZCO before being eligible to practise in the position. RANZCO conducts concurrent comparability and suitability assessments. You should apply for an AoN Suitability Assessment concurrently with a Comparability Assessment.

Who is eligible for assessment?

As part of the Medical Board of Australia (MBA's) [Specialist Pathway](#), RANZCO is directed to conduct assessments for the application types detailed below. Upon completion of an assessment, RANZCO will provide a recommendation as to whether a SIMG applicant is eligible to apply for specialist registration.

To be eligible to apply for **specialist recognition** with RANZCO, an applicant must have:

- a primary qualification in medicine and surgery from a training institution recognised by both the Australian Medical Council and the World Directory of Medical Schools; and
- satisfied all the training and examination requirements to practise in the specialty in their country of training.

To be eligible to apply for **area of need** assessment, an applicant must:

- have been offered a designated AoN position; and
- meet the criteria for specialist recognition (as above); and
- also apply for specialist assessment with RANZCO.



Roles and responsibilities of the applicant

It is your responsibility to be fully informed of, and comply with, all aspects of assessment, registration, and employment regulations in Australia. This includes understanding the role of the AMC, the MBA, AHPRA, RANZCO and the Department of Human Services (Medicare provider status) as well as organisations that can assist with immigration and employment opportunities.

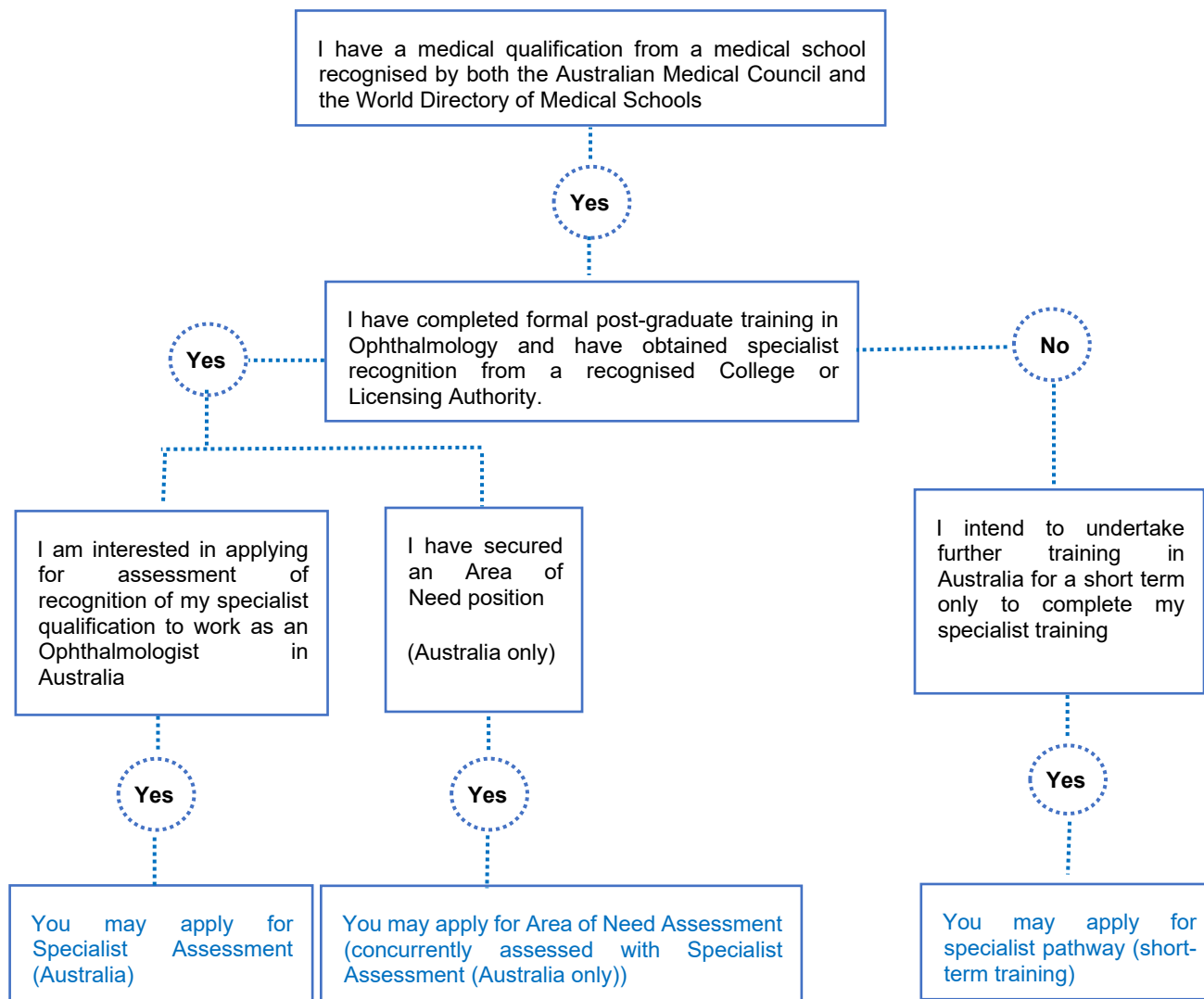
It is important that you prepare well before applying for specialist recognition, including taking timeframes into consideration for completing ongoing assessments that are required by the MBA and RANZCO. We also recommend that you research prospective employment opportunities in Australia before applying.

Selecting your pathway

Which pathway applies to me?

To help you decide which pathway may be relevant, an initial self-assessment check and overview of the specialist pathways is provided as a guide.

The self-assessment flowchart will assist you to determine which pathway to apply for as a SIMG wishing to practise ophthalmology in Australia.



Specialist assessment process

Pre-Assessment Application

The process of applying for Specialist Pathway (Specialist Recognition or concurrent Specialist Recognition and Area of Need Assessment) involves obtaining a primary source verification, completing the AMC online application to establish an AMC portfolio, then applying directly to RANZCO for assessment.

Step 1 | You will need to apply for Primary Source Verification via the [ECFMG](#).

Before applying to RANZCO for Specialist Recognition Assessment, you must apply to have your medical qualifications (primary and specialist) verified by the AMC through the Educational Commission for Foreign Medical Graduates (**ECFMG**) Electronic Portfolio of International Credentials (**EPIC**).

This is a mandated requirement under the Health Practitioner Regulation National Law Act 2009 (National Law) for all SIMGs seeking registration in any category in Australia.

Step 2 | Complete an AMC online application to establish an [AMC portfolio](#).

After applying to the ECFMG for primary source verification of your qualifications (primary and specialist), you will need to complete an AMC online application to establish an AMC portfolio. Sign into your candidate account [here](#).

You are now ready to apply **directly to RANZCO** for specialist assessment.

If you have been offered an Area of Need position, submit your Area of Need assessment application with your specialist assessment application. Applicants should ensure they provide an EPIC and AMC number to RANZCO with their application.



Step 3 | Apply directly to RANZCO for assessment. All applications must be lodged with RANZCO online (see information on the SIMG website on how to receive log in details to submit your application).

- Register for a RANZCO login by completing the [registration form](#)
- Once you have login details, please log into the [RANZCO Portal](#)
- Once you are logged in, you will see the Applications tile
- Select the application which you wish to complete

We recommend that you read this guide in full before making an initial enquiry about assessment.

Who will assist me with my application?

The RANZCO SIMG Team

This guide provides the full step-by-step process to support your application to RANZCO. The SIMG team at RANZCO manages all specialist assessment applications and is here to help.

Email address
img@ranzco.edu

Contact number
+61 2 9690 1001

Postal address
The SIMG Manager
RANZCO
94-98 Chalmers Street
Surry Hills, NSW, 2010
PO Box 92
Strawberry Hills NSW 2012

Applying

Please visit our [SIMG pages](#) for further information, FAQs and forms and resources regarding the application process.

Assessment fees

You must include the application fee when submitting the online application and required documents. This fee only covers your application and does not include fees for further assessment tasks which may be required. An application shall not be successfully lodged with RANZCO unless and until it is complete, and the application fee has been paid in full. The following fee schedule is correct as of September 2022 but is subject to change. We recommend that you check our FAQ website for current fees at the time of (application) submission.

Other	Specialist recognition assessment	AUD 6650
	Concurrent specialist recognition and area of need assessment	AUD 6650
	RACE clinical component	AUD \$3,023
	Incomplete application administration	AUD 650
	RACE withdrawal	AUD 100

How we assess your application

Assessment Criteria

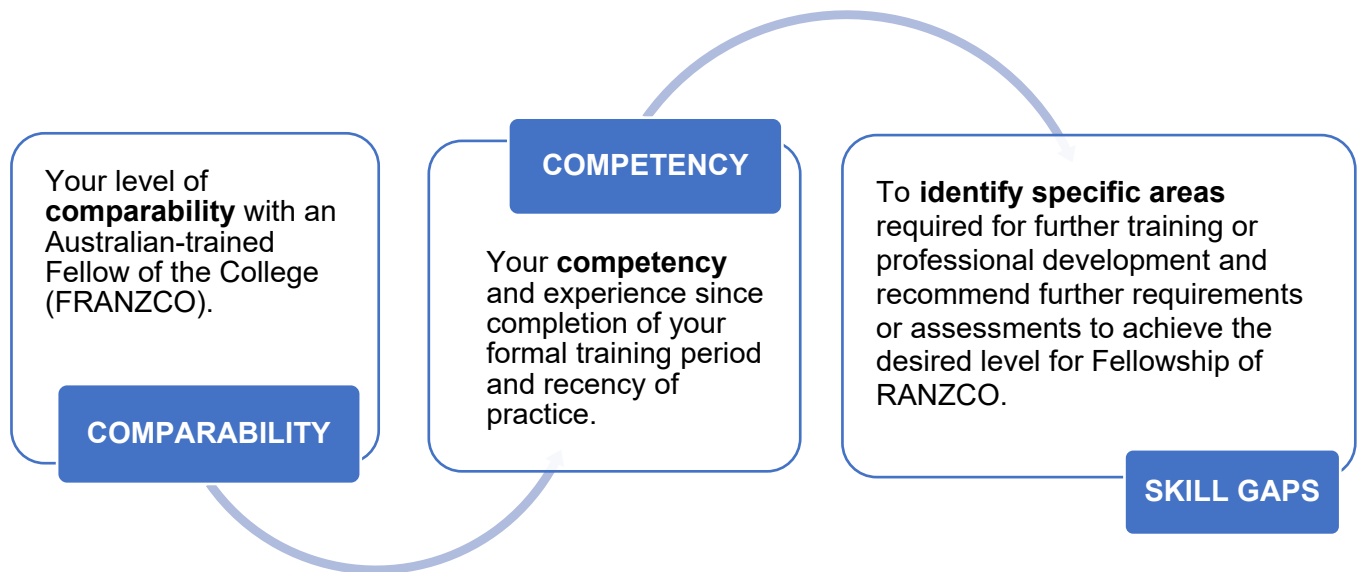
The criteria used to assess a SIMG's comparability are aligned with the RANZCO VTP and its Curriculum Standards.

To be assessed as Substantially Comparable, you must satisfy RANZCO's requirements in relation to previous training, assessment, recent specialist practice and continuing professional development (CPD).

Your Application Evidence must also demonstrate that previous training, assessment, recent specialist practice and CPD have provided you with the professional capabilities, knowledge and clinical skills expected of an Australian trained ophthalmologist commencing practice.

Comparability of assessment

The Comparability Assessment is based on the professional capabilities, knowledge and clinical skills expected of an Australian trained ophthalmologist commencing practice. The purpose of the assessment of comparability is to determine the following:



To satisfy RANZCO's requirements, your Application Evidence must demonstrate the following:

Professional Capabilities	You must demonstrate that you possess the professional capabilities expected of an Australian trained ophthalmologist. These capabilities are identified in the Professional Capabilities Curriculum Standard
Knowledge and Clinical Skills	You must demonstrate that you possess the knowledge and clinical skills expected of an Australian trained ophthalmologist. These are covered in RANZCO's VTP and its Curriculum Standards including minimum surgical number and research requirements.

Available assessments

A Comparability Assessment may result in one of the following assessments:

- Substantially Comparable
- Partially Comparable or
- Not Comparable

Definitions of comparability

RANZCO adopts the definition of Substantially Comparable, Partially Comparable and Not Comparable as published by the MBA and AHPRA.

Substantially Comparable

A SIMG will be assessed Substantially Comparable if:
The applicant has been assessed as suitable to undertake the intended scope of practice, taking full responsibility for individual patients with only oversight of their practice by a supervisor approved by RANZCO. To be considered substantially comparable an applicant must have satisfied the college that they are at the standard of an Australian trained specialist commencing practice (at the level of a newly qualified Fellow), taking into consideration the applicant's previous training and assessment, recent specialist practice, experience and continuing professional development (CPD).

Partially Comparable

A SIMG will be assessed Partially Comparable if:
The applicant has been assessed as suitable to undertake their intended scope of practice under the supervision of a college approved supervisor. To be considered partially comparable an applicant must satisfy the college that they will be able to reach the standard of an Australian trained specialist within a maximum period of 24 months FTE practice. The standard expected is that of an Australian trained specialist commencing practice (at the level of a newly qualified Fellow), taking into consideration the SIMG's intended scope of practice as well as their previous training and assessment, recent specialist practice, experience and CPD.

Not Comparable

A SIMG will be assessed Not Comparable if:
The applicant does not meet the requirements of RANZCO in regard to previous training, assessment, recent specialist practice and CPD, or is assessed as unable to reach comparability within 24 months full-time equivalent of practice.

For the full definitions, please see the [MBA's Guide to the Specialist Pathway](#).

Resulting actions

The resulting actions against assessment determination may include:

- a) A **Not Comparable** assessment is a final assessment.
- b) A **Partially Comparable** and **Substantially Comparable** assessment is an interim assessment and shall be expressed as subject to Further Requirements.

AoN Suitability Assessments may result in:





- a) A **suitable** or
- b) **not suitable** assessment;

Both suitable and not suitable AoN assessments are final assessments.

Assessment stages

Stages defined

The **Comparability Assessment** process is a staged process, outlined below. RANZCO has a four (4) stage assessment process:

Stage 1	Stage 2	Stage3	Stage 4
			
Document Review	Structured Interview	Further Requirement Completion (Supervised practice and/or RACE examination or period of oversight)	Final Assessment

What happens at each stage?

Staging is determined on a case-by-case basis depending on the current Committee Assessment as to Comparability. At each stage, a determination is made, and the assessment is either concluded or the requirements to progress to the next stage set out. The four-stage process is outlined here against each stage providing details on the available assessment for each, the status of assessment and resulting actions.



Stage 1 | Document Review

The Document Review Panel conduct the Document Review of the application. The onus is placed on the applicant to provide evidence to support their application. In the absence of satisfactory evidence, assessment of comparability will not be assumed.

The outcome of the Document Review will be either:

- » **Not Comparable** to an Australian trained ophthalmologist and both the AMC and applicant will be informed.
- » **Comparability yet to be determined** and proceed to Structured Interview for assessment of comparability to an Australian trained ophthalmologist.

Applicants assessed as **Not Comparable** at Document Stage will not be eligible to proceed and must exit the process.

An applicant assessed as **Not Comparable** after Document Review will be provided with a summary of preliminary review (SPR). The SPR addresses procedural fairness for SIMGs and aims to ensure that SIMGs have seen the information which colleges will use to make a decision. The SIMG will be given an opportunity to add to or correct the details of that information before the interim decision is made.

The SPR will set out:

- a) a summary of the information provided by the SIMG in their application mapped against RANZCO’s assessment criteria. That is, the assessment will identify gaps or findings of equivalence or alignment in the SIMG’s training, assessments/examinations, experience, recency of practice and CPD against an Australian trained specialist in the same field of practice
- b) the SIMG’s registration status or eligibility to practise as a specialist in their field of specialty practice in their country of training, and
- c) any other information obtained by the college about the SIMG which will be relied on to make an interim assessment decision.

The SPR gives the SIMG an opportunity to:

- a) ensure the college has taken into consideration and assessed all the information provided by the SIMG
- b) provide clarification or submit additional evidence if they believe there are errors of fact, perceived gaps or omissions in the information assessed.

RANZCO will consider the SIMG’s response in making its interim assessment decision.

If a response from the SIMG is not received within the defined timeframe or within an extended timeframe agreed between RANZCO and the SIMG, RANZCO will proceed to the next step.

Stage	Available Assessment	Status Assessment	of Resulting Actions
Document and SPR Review	Not Comparable	Final	Applicant exits process
Document Review	Comparability yet to be determined	Interim	Applicant progresses to Interview stage



Stage 2 | Structured Interview

Eligible applicants processed through the Stage 1 - Document Review process will be offered an opportunity to participate in a structured interview.

The interview is conducted by a panel of SIMG Committee members. The purpose of the interview is, in conjunction with the documentation, to further determine the applicant’s level of comparability. The panel will use various criteria to determine whether a SIMG is substantially, partially or not comparable to an Australian trained ophthalmologist.

The interim determination following the Structured Interview will be confirmed as:

- » **Not Comparable** to an Australian trained ophthalmologist
- » **Partially Comparable** to an Australian trained ophthalmologist
- » **Substantially Comparable** to an Australian trained ophthalmologist

Applicants assessed as **Not Comparable** at Interview Stage will not be eligible to proceed and must exit the process.

Stage	Available Assessment	Status Assessment	of Resulting Actions
Interview plus provision of summary of preliminary review (as described above)	Not Comparable	Final	Applicant exits process
	Partially Comparable	Interim	Applicant undertakes Further Requirement <ul style="list-style-type: none"> 6-24 months Period of Supervised Practice/ Upskilling and may be required to sit a formal exam
	Substantially Comparable	Interim	Applicant undertakes Further Requirement <ul style="list-style-type: none"> 3-12 months Period of Oversight



- Q. Can the interview be via phone or videoconference?
A. All interviews are conducted either via Zoom teleconferencing or face-to-face at RANZCO in Sydney where applicable.
- Q. How long will the interview take?
A. Interviews will normally take between 30 and 45 minutes.
- Q. What is the format of the interview?
A. The interview is conducted by a panel of SIMG Committee members. The purpose of the interview is, in conjunction with the documentation, to further determine the applicant's level of comparability. The panel will use various criteria to determine whether a SIMG is substantially, partially, or not comparable to an Australian trained ophthalmologist.
The process is designed to elicit a thorough understanding of your training and experience in ophthalmology. The interview is not a clinical assessment.



Stage 3 | Further Requirement Completion

All applicants determined as **Substantially** or **Partially Comparable** are required to undertake Further Requirements and need to complete those before they can proceed to the Final Assessment Stage.

All applicants determined as **Partially Comparable** must undertake a Period of Supervised Practice. During this period of up to 24 months (FTE), the applicant will undertake upskilling with associated assessment under a supervisor(s) approved by RANZCO. This Period of Supervised Practice should be undertaken in an Australian public hospital with work performance reviewed every three (3) months. In addition, applicants may be required to sit the RACE Clinical examination. The RACE Clinical examination must be attempted at the first available sitting after completion of the Period of Supervised Practice.

All applicants determined as **Substantially Comparable** must undertake a Period of Oversight of up to 12 months (with a minimum of three (3) months).

Stage

Further Requirement Completion	Applicants complete Further Requirements such as Period of Supervised Practice and/or Examination or Period of Oversight.
--------------------------------	---



Stage 4 | Final Assessment

SIMGs determined as **Partially Comparable** and **Substantially Comparable** at Stage 2 and 3 will be reviewed as part of Stage 4 Final assessment at the conclusion of their Further Requirements.

The final determination at Stage 4 will be assessed as:

- » **Not Comparable** – unsatisfactory completion of Further Requirements.
- » **Substantially Comparable** - satisfactory completion of Further Requirements.

Applicants determined as **Not Comparable** at this final determination point must exit the process.

Stage	Available Assessment	Status Assessment	of Resulting Actions
Additional Requirement Completion	Not Comparable (unsatisfactory work performance at 12 months and 24 months Period of Supervised Practice and unsatisfactory RACE results (if required))	Final	Applicant exits process
	Substantially Comparable (satisfactory Period of Supervised Practice and satisfactory RACE results (if required) or Period of Oversight)	Final	Applicant is eligible to apply for specialist registration and FRANZCO.

AoN Assessment

RANZCO conducts concurrent Comparability and Suitability Assessments. You should apply for an AoN Suitability Assessment concurrently with a Comparability Assessment.





The Interview Panel may conduct the AoN Suitability Assessment during the Post-Interview Meeting. This is to determine whether, based on the Application Evidence and the Comparability Assessment, the applicant's training and experience are suitable to undertake the activities described in the AoN Position Description as specified in the Application.

For more information regarding AoN Assessment, visit AHPRA and MBA websites.

Timeframes

Timeframes for completion vary due to differing requirements for individual applicants. The following should be taken as a guide to the time required for the various stages and assessment tasks.

Upon receipt of an application, RANZCO considers the individual should be available to undergo assessment tasks as required. Extensions to timeframes may only be granted under exceptional circumstances.

 Stage 1	 Stage 2	 Stage 3	 Stage 4
<p>Document Review</p> <p>Four to six weeks from submission of the complete application</p>	<p>Structured Interview</p> <p>May be conducted up to four months following the outcome of the Document Review</p> <p>SPR to be provided within 14 days after the interview</p>	<p>Further Requirement Completion</p> <p>Maximum of four years to complete up to 24 full-time equivalent (FTE) calendar months of Further Requirements (including formal examinations).</p>	<p>Final Assessment</p> <p>Timing will depend on completion of Further Requirements.</p>

Interim assessments

<p>Stage 3 Further Requirements</p> <p> Period of Supervised Practice/Up-skilling</p>	<p>SIMGs assessed as Partially Comparable shall have a total of four (4) years to complete up to 24 full-time equivalent (FTE) calendar months of Further Requirements (typically Period of Supervised Practice/Up-skilling).</p>
<p>Stage 3 Further Requirements</p> <p> Period of Oversight</p>	<p>SIMGs assessed as Substantially Comparable shall have a total of two (2) years to complete up to 12 full-time equivalent (FTE) calendar months of Further Requirements (typically a Period of Oversight).</p>
<p>Stage 3 Further Requirements</p> <p> Start of practice</p>	<p>The starting date for the maximum timeframes is the date a SIMG starts practice in a position approved for completion of specified Further Requirements. The length of time permitted to lapse between the interim assessment decision and the start of practice shall not be greater than 24 months</p>

About the RANZCO Advanced Clinical Examinations (RACE)

Overview

If an applicant for specialist recognition assessment is determined as Partially Comparable, they will be required to complete Further Requirements. The RACE Clinical examination may be used as Further Requirement.

The RACE Clinical exam is used as an information gathering tool to help the SIMG Committee come to a decision after SIMGs have finalised their upskilling requirements. It is not assessed on a pass or fail basis, and it is not related to the RACE requirements of RANZCO trainees (i.e. pass criteria, number of attempts allowed). Eligible SIMG applicants are only allowed one attempt and can only sit in semester 2 except in exceptional circumstances.

Information about the clinical component of the RACE

The clinical component of the RACE is run over two days in a major training hospital in Australia or New Zealand. There are 18 Objective Structured Clinical Examination (OSCE) stations with each clinical curriculum performance standard examined in two stations. Each OSCE station is allocated nine minutes, allowing a changeover of two minutes between stations. The number of rest stations will depend on the total number of candidates.

All questions in the RACE are currently based on the 2014 clinical curriculum performance standards which are published on the [RANZCO website \(these will change over to the new curriculum standards in 2023\)](#). It is extremely important to direct your studying from these documents as each question will be referenced to them.

Eligible SIMG candidates will be given full access to the RACE Resources on the RANZCO Online Learning site. The timetable, registration form and further information about the RACE examination is available on the [RANZCO website](#).

Applicants are encouraged to attend a registrar training course such as the [Dunedin Ophthalmology Clinical Course](#) to prepare for their clinical exam. This is an intensive, interactive, 2-week residential course conducted in Dunedin (New Zealand) in November each year. It is also suggested that applicants join a RANZCO VPT trainees' study group (if applicable) and sit one of the mock exams at your nearest training hospital.

Completion of pathway

At each stage where an interim or final assessment decision is made, the applicant and AMC/AHPRA will receive the relevant Medical Board of Australia report and a College letter. Educational support

SIMG Resources

SIMGs will have access to educational resources to support their preparation for the RACE Examination. Visit our Online Learning site [for information about the RACE Examination](#). Access is only available to SIMGs who are required to sit the RACE Exam as part of their Further Requirements.

Supervision

SIMGs on the Specialist Pathway who are required to complete a Period of Supervised Practice and/or Period of Oversight, must have an approved supervisor throughout the duration of the pathway. A supervisor's role is primarily to provide guidance and feedback on matters of personal, professional, and educational development in the context of the SIMG's experience in providing safe and appropriate patient care.

Policies & Procedures

[Please use the RANZCO Policies and Guidelines page on the RANZCO website for locating up-to-date policies covering a wide range of topics including \(but not limited to\) SIMG Policy, the Area of Need, Code of Conduct, Conflict of Interest, Examinations, Reconsideration, Review and Appeal.](#)

Quick Links

MBA – Standards: Specialist medical college assessment of specialist international medical graduates	https://www.medicalboard.gov.au/Registration/International-Medical-Graduates/Specialist-Pathway/Guides-and-reports.aspx
MBA – Guidelines - Supervised practice for international medical graduates	https://www.medicalboard.gov.au/Codes-Guidelines-Policies/Supervised-practice-guidelines.aspx
MBA – SPPA-30 Form – Supervised practice plan for international medical graduates	https://www.medicalboard.gov.au/Registration/Forms.aspx
MBA – WRIG-30 Report – Work performance report for international medical graduates	https://www.medicalboard.gov.au/Registration/Forms.aspx
RANZCO Reconsideration, Review and Appeals Policy, Application and User Guide Q&As	https://ranzco.edu/home/policies-and-guidelines/
RANZCO Conflict of Interest Policy	https://ranzco.edu/home/policies-and-guidelines/
RANZCO Examination Policy	https://ranzco.edu/home/policies-and-guidelines/
RACE Exam Information	https://ranzco.edu/home/future-ophthalmologists/vocational-training-program/examinations/

For all SIMG documents, see:

<https://ranzco.edu/home/future-ophthalmologists/specialist-international-medical-graduate/forms-and-resources/>

Privacy

Collection and handling of information relating to SIMG assessment will be managed in accordance with RANZCO's Privacy Policy.

Appeals

Reconsideration, Review and Appeals Policy

Any person who is dissatisfied with, and adversely affected by an assessment result may, within 30 days, apply to have the decision reconsidered or reviewed. Any final assessment decision made by RANZCO is subject to the RANZCO Reconsideration, Review and Appeals Policy. A copy of this policy is available on the College's website.

Useful contacts

[Department of Home Affairs](https://www.homeaffairs.gov.au/)

<https://www.homeaffairs.gov.au/>

[Australian Medical Council \(AMC\)](https://www.amc.org.au/assessment/pathways/overview/)

<https://www.amc.org.au/assessment/pathways/overview/>

[Medical Board of Australia \(MBA\)](https://www.medicalboard.gov.au/Registration/International-Medical-Graduates.aspx)

<https://www.medicalboard.gov.au/Registration/International-Medical-Graduates.aspx>

[Australian Health Practitioner Regulation Agency \(AHPRA\)](https://www.ahpra.gov.au/Registration/Registration-Process.aspx)

<https://www.ahpra.gov.au/Registration/Registration-Process.aspx>

[Department of Health and Aged Care](https://www.health.gov.au/)

<https://www.health.gov.au/>

[DoctorConnect](http://www.doctorconnect.gov.au)

www.doctorconnect.gov.au

[Australian Medical Association \(AMA\)](https://ama.com.au/careers/international-medical-students-and-graduates)

<https://ama.com.au/careers/international-medical-students-and-graduates>